

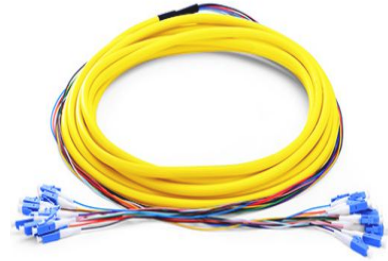
Patch Cord



Patch Cord Simplex



Patch Cord Duplex



Patch cord Bunch



Patch GJXH Simplex



Pigtail Simplex



Pigtail Colors



Pigtail Bunch



Pigtail GJXH Simplex

Patch Cord assemblies are cord-type fiber optical cables terminated with connectors at both end. The type of cable fiber and connector and the length of the patch cords can be freely specified by the customer as shown below. Pigtails are used for terminating fiber optical cables by splicing them the fibers of the cable and connecting the other end, which supplied with a connector to a patch panel or directly to equipment.

Features

- End-Face Type: PC/UPC/APC
- Customer lengths and connectors are available upon request

- Fiber Diameter:9/125; 50/125; 62/125 Available for Simplex and duplex, pigtail type
- Low insertion loss and high return loss, high dense connection, easy for operation
- Fiber Type: Single mode fiber G652D, G657A1 and G657A2, Multimode fiber OM1, OM2, OM3 and OM4 are available
- The outer jacket can be PVC, LSZH, OFNR, OFNP, Armored etc Available for different connectors: SC, LC, FC, ST, MPO/MTP, MTRJ, MU, etc

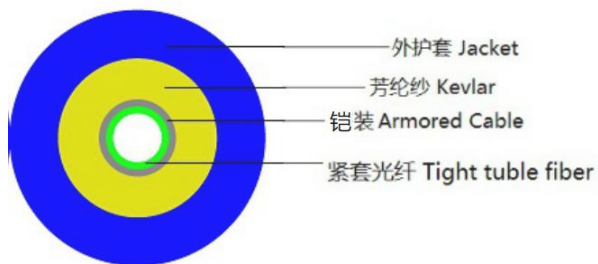
Applications

- CATV
- Computer networks
- Telecommunication networks
- ODF of optical transmission system
- High speed data transmission network
- High quality graphic transmission network
- Connection of optical transmission equipment

Technical indicators

Parameter	Unit	FC, SC, LC,ST,MU,DIN,D4,MPO				E2000	
		SM(G657A1、 G652D、 SMF-28 etc.)			MM(OM1、 OM2、 OM3 etc.)	SM	
		PC	UPC	APC	PC	PC	APC
Insertion loss(typical)	dB	≤0.3	≤0.2	≤0.25	≤0.2	≤0.3	≤0.3
Return loss	dB	≥45	≥50	≥60	≥30	≥55	≥75
Operating wavelength	nm	1310, 1510					
Exchangeability	dB	≤0.2					
Vibration	dB	≤0.2					
Operating temperature	°C	-40~75					
Storage temperature	°C	-45~85					
Cable Type		Simplex or duplex(zip cord) φ2.0mm, φ0.9mm,φ3.0mm,PVC or LSZH,Armored					

Dimensions



Armored Patch Cord



Patch Cord

Naming Rules

Naming Rules For Patch Cord Duplex Or Simplex

Part Number: SPP - SC - FC - AA - 2D - 30 - 5V(A)
 1 2 3 4 5 6 7 8 9 10

Product Description: Patch Cord Duplex 2×SC/UPC 2× SC/UPC G.652D 3.0mm 5M length PVC Armored

1 - Connector A	LC SC FC ST etc
2 - Connector B	LC SC FC ST etc
3 - Endface A	U: UPC polish; P: PC polish; A: APC polish
4 - Endface B	U: UPC polish; P: PC polish; A: APC polish
5 - Fiber Count	1: Simplex; 2: Duplex
6 - Fiber Mode	M1: OM1; M2: OM2; M3: OM3; M3H:OM3(300); M4: OM4; D: G.652D; A1: G657.A1
7 - Diameter	09:0.9mm ; 20: 2.0mm ; 30: 3.0mm etc
8 - Length	5 : Cable total length5M ; etc
9 - Cable Jacket Materials	V:PVC; H:LSZH; O:OFNR; F:OFNP; Y:PE
10 - Armored	Null: Without armoured A: Armored
Cable Jacket Color	Default: Aqua (OM3,OM4) Gray (OM1,OM2) , Blue (SM)

Naming Rules For Pigtail Duplex Or Simplex

Part Number: SPP - SC - U - 2D - 0.9 - 0.5V
 1 2 3 4 5 7 8

Product Description: Pigtail Duplex SC/UPC G.652D 0.9mm 0.5M length PVC

1 - Connector A	LC SC FC ST etc
2 - Endface A	U: UPC polish; P: PC polish; A: APC polish
3- Fiber Count	1: Simplex; 2: Duplex; 12:12 cores; 24:24 cores etc
4 - Fiber Mode	M1: OM1; M2: OM2; M3: OM3; M3H:OM3(300); M4: OM4; D: G.652D; A1: G657.A1
5 - Diameter	09: 0.9mm 20: 2.0mm ; 30: 3.0mm ;
6- Length	0.5 : Cable total length0.5M etc
7 - Cable Jacket	V:PVC; H:LSZH; O:OFNR; F:OFNP; Y:PE

Materials	
8 - Armored	Null: Without armoured A: Armored
Cable Jacket Color	Default: Aqua (OM3,OM4) Gray (OM1,OM2) , Blue (SM)

Naming Rules For Patch Cord Bunch	
Part Number:	SPP-SC-SC-A A- 12 D- 20 H- 09 09- 1 1 2 3 4 5 6 7 8 9 10 11
Product Description:	Patch cord Bunch 12 Cores 12× SC/APC 12× SC/APC 1M branch 0.9mm branch(0.9mm in main cable) G.652D 20M length PVC
1 - Connector A	LC SC FC ST etc
2 - Connector B	LC SC FC ST etc
3 – Endface A	U: UPC polish; P: PC polish; A: APC polish
4 – Endface B	U: UPC polish; P: PC polish; A: APC polish
5 - Cores	12: 12 cores; 24: 24 cores etc
6 - Fiber Mode	M1: OM1; M2: OM2; M3: OM3; M3H:OM3(300); M4: OM4; D: G.652D; A1: G657.A1
7 - Length	20 : Cable total length 20M etc
8 - Cable Jacket Materials	V:PVC; H:LSZH; O:OFNR; F:OFNP; Y:PE
9 -Branch Diameter	09: 0.9mm branch ; 20: 2.0mm branch; 30: 3.0mm ;
10 - Main Diameter	09:0.9mm in main cable; 20:2.0mm in main cable; 30:3.0mm in main cable;
11 - Branch Length	1:Branch length 1M

Note:

- 1.Default Connector A - Connector B order in PN: LC-SC LC-FC LC-ST SC-FC SC-ST FC-ST
- 2.When Connector A is same as Connector B , Default Endface A - Endface B order in PN: UA PA UP
- 3.M3 (OM3) :10G multimode optical fiber can be divided into three categories, 150 M, 300 M, and 550 M according to the maximum transmission distance.The default is 150M
- 4.M3H: OM3(300) Maximum transmission distance of 300 M
5. Additional instructions for the branch:
 - ①When the main diameter cable is not marked, the default is 2.0mm ;
 - ② “-X” Other branch length, Next to the branch diameter, continue to add at the end of the model. The length of both sides of the branch is different as -M (custom branch length).
- 6.6.If you need more customized services, please contact us.

E-mail: sales@sopto.com

Web : <http://www.sopto.com>